

## Laboratory-based Virology Weekly Report

Week 33 ending 22 August, 2021

The laboratory-based surveillance for influenza and common respiratory viruses is carried out all-year-around by the NZ virus laboratory network consisting of the WHO National Influenza Centre (NIC) at ESR and six hospital laboratories in Auckland (2), Waikato, Wellington, Christchurch and Dunedin. This laboratory network tests specimens ordered by clinicians for hospital inpatients and outpatients during normal clinical practice (serving ~70% of the NZ population). In addition, this laboratory network also conducts testing for public health surveillance, including SARI, ILI and WellKiwis (i.e. SHIVERS) cohort surveillance.

Caution is needed in the interpretation : 1) Sample collection is ordered by clinicians based on clinical judgement for patient management, rather than a systematic sampling approach for surveillance; 2) The number of laboratory tests can be influenced by testing priorities and demands, reagent and resource availability; 3) Testing technology and instruments evolve over the years which may have contributed to improved sensitivity for detection in recent years.

The below Tables and Figure show the weekly influenza and common non-influenza viruses reported from the laboratory network in 2021.

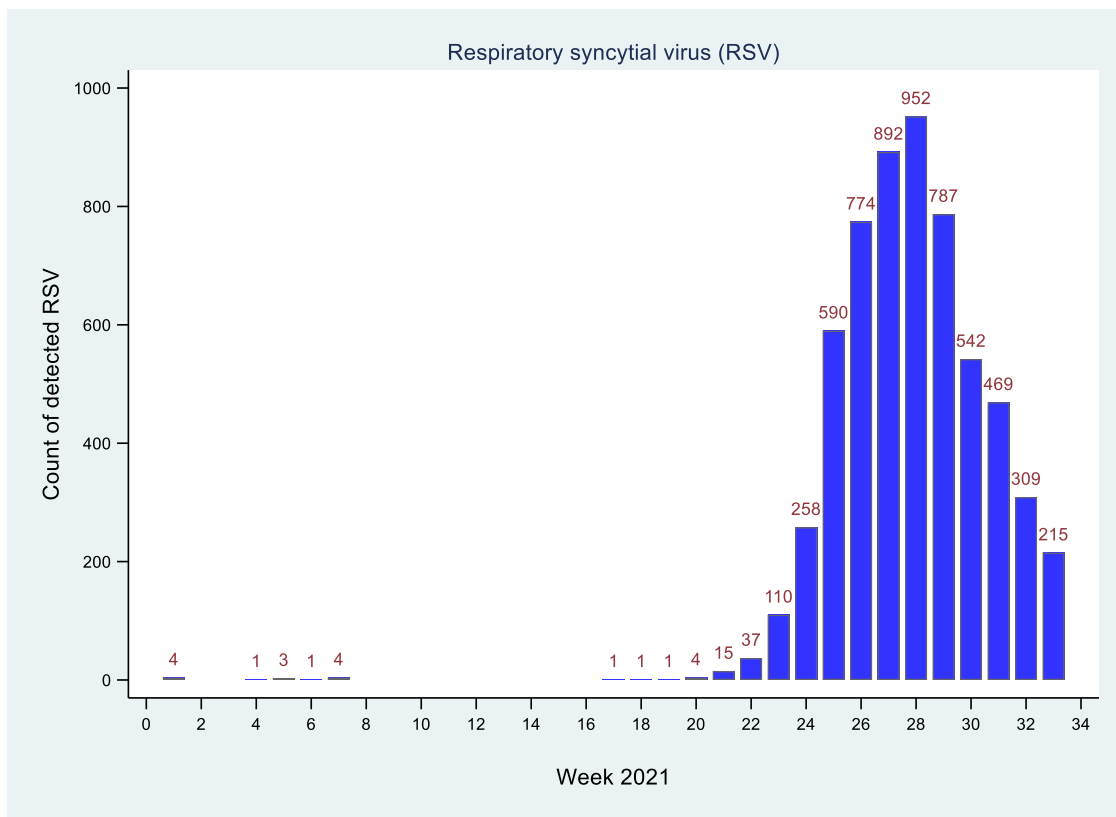
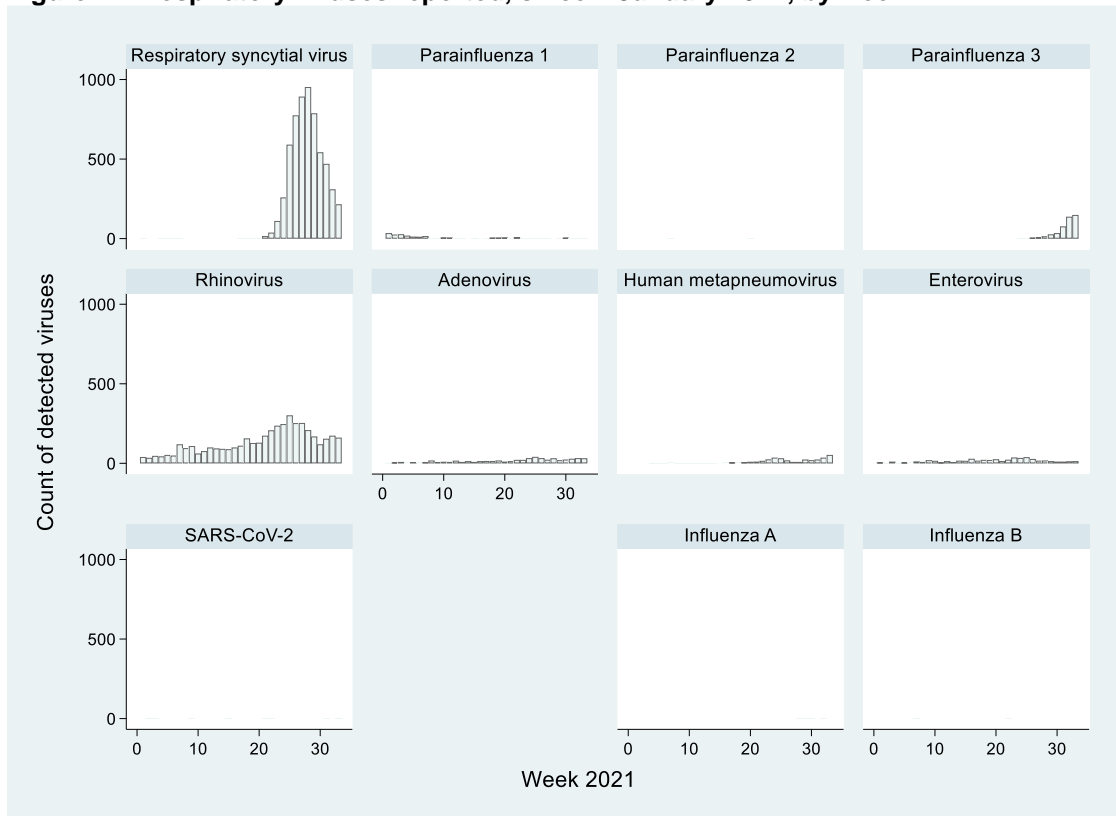
**Table 1. Non-influenza respiratory viruses reported, since 1 January 2021**

<i>Non-influenza respiratory viruses</i>	Week 33	Total
No. of positive specimens	625	12413
Respiratory syncytial virus (RSV)	215	5970
Parainfluenza 1 (PIV1)	3	219
Parainfluenza 2 (PIV2)	0	2
Parainfluenza 3 (PIV3)	148	451
Rhinovirus (RV)	161	4363
Adenovirus (AdV)	31	536
Human metapneumovirus (hMPV)	52	354
Enterovirus	13	507
SARS-CoV-2	2	11

**Table 2. Influenza respiratory viruses reported, since 1 January 2021**

<i>Influenza viruses</i>	Week 33	Total
No. of positive specimens	0	5
<b>Influenza A</b>	<b>0</b>	<b>3</b>
A (not subtyped)	0	1
A(H1N1)pdm09	0	0
A(H1N1)pdm09 by PCR	0	0
A/Victoria/2570/2019 (H1N1)pdm09 - like	0	0
A(H3N2)	0	2
A(H3N2) by PCR	0	2
A/Hong Kong/2671/2019 (H3N2)-like	0	0
<b>Influenza B</b>	<b>0</b>	<b>2</b>
B (lineage not determined)	0	0
B/Yamagata lineage	0	0
B/Yamagata lineage by PCR	0	0
B/Phuket/3073/2013 - like	0	0
B/Victoria lineage	0	2
B/Victoria lineage by PCR	0	2
B/Washington/02/2019-like	0	0

**Figure 1. Respiratory viruses reported, since 1 January 2021, by week.**



Numbers for recent weeks are updated due to time lag in receiving laboratory test results.

This weekly report is compiled by ESR. For more information please contact:  
 Tim Wood: T: +64 4 529 0611 E: [Tim.Wood@esr.cri.nz](mailto:Tim.Wood@esr.cri.nz)  
 Sue Huang: T: +64 4 529 0606 E: [Sue.Huang@esr.cri.nz](mailto:Sue.Huang@esr.cri.nz)